



NATA LIGHTING CO.,LTD.  
www.nata.cn  
Email:info@nata.com  
Tel:+86-750-3770000 Fax:+86-750-3771111  
Address:380JinOu Road,GaoXin Zone,Jiang Men City,Guangdong,China

NT

Client:

LumCAT: 2-2685-L

Luminaire: 92.70.412.00

Report No: 2024326-B018

Ballast type: AC

Test No: 2024326-C018

Voltage(V): 34.440

LampCAT: Fortimo\_SLM\_C\_1210

Current(A): 0.720

Lamp flux(lm): 4230.0

Power (W): 24.796

Number of Lamps: 1

PF: 0.000

Length(mm): 0

Width(mm): 0

Phm Type: C

Height(mm): 0

### Photometric Results

Lumens(lm): 3633.30, Efficiency(%): 85.89% , Luminous Efficacy(lm/W): 146.53

Central intensity(cd): 5987.643, Maximum intensity(cd): 5987.643

Angle of maximum intensity: C=0.0  $\gamma$ =0.0

Beam Angle(50%Imax): [C0/180]Total=46.4

[C90/270]Total=46.4

Field angle(10%Imax): [C0/180]Total=70.6

[C90/270]Total=70.6

Maximum s/h(1/2): C0\_180=0.74 C90\_270=0.74

Maximum s/h(1/4): C0\_180=0.73 C90\_270=0.73

Up flux rate of lamp(%): 0.00%

Down flux rate of lamp(%): 85.89%

Up flux rate of LUM(%): - -

Down flux rate of LUM(%): 100.00%

CIE Type : Direct lighting

Output flux ratio in  $\pi$  solid angle : 97.938%

Equipment: GMS1980  
Temperature(°C): 25.0

Date: 2024/3/26  
Humidity(%): 60.0%

Operator: NT07  
Distance(m): 7.65

$\gamma(^{\circ})$	Average I(cd)	Zonal F(lm)	Sum F(lm)	Eff Flux(%)	Eff Sum(%)
0.0	5987.642	0.000	0	0.00%	0.00%
1.0	5981.058	5.727	5.727	0.14%	0.16%
2.0	5963.209	17.144	22.87	0.41%	0.63%
3.0	5934.825	28.456	51.327	0.67%	1.41%
4.0	5896.200	39.602	90.929	0.94%	2.50%
5.0	5849.236	50.528	141.457	1.19%	3.89%
6.0	5797.736	61.208	202.665	1.45%	5.58%
7.0	5731.313	71.561	274.226	1.69%	7.55%
8.0	5650.845	81.460	355.685	1.93%	9.79%
9.0	5547.041	90.753	446.438	2.15%	12.29%
10.0	5441.261	99.440	545.878	2.35%	15.02%
11.0	5312.731	107.454	653.333	2.54%	17.98%
12.0	5181.421	114.716	768.049	2.71%	21.14%
13.0	5028.239	121.163	889.212	2.86%	24.47%
14.0	4869.862	126.695	1015.907	3.00%	27.96%
15.0	4715.216	131.588	1147.495	3.11%	31.58%
16.0	4534.236	135.530	1283.025	3.20%	35.31%
17.0	4331.162	138.058	1421.083	3.26%	39.11%
18.0	4120.116	139.343	1560.427	3.29%	42.95%
19.0	3922.163	139.919	1700.346	3.31%	46.80%
20.0	3700.436	139.515	1839.861	3.30%	50.64%
21.0	3469.858	137.684	1977.545	3.25%	54.43%
22.0	3241.620	134.870	2112.415	3.19%	58.14%
23.0	3035.182	131.704	2244.119	3.11%	61.77%
24.0	2827.280	128.174	2372.293	3.03%	65.29%
25.0	2624.207	123.955	2496.248	2.93%	68.70%
26.0	2426.036	119.212	2615.46	2.82%	71.99%
27.0	2209.283	113.404	2728.864	2.68%	75.11%
28.0	2013.452	106.911	2835.775	2.53%	78.05%
29.0	1812.866	100.107	2935.882	2.37%	80.80%
30.0	1483.911	89.012	3024.894	2.10%	83.25%
31.0	1330.385	78.318	3103.212	1.85%	85.41%
32.0	1180.114	71.923	3175.135	1.70%	87.39%
33.0	1002.476	64.300	3239.435	1.52%	89.16%
34.0	805.606	54.718	3294.153	1.29%	90.67%
35.0	639.205	44.870	3339.023	1.06%	91.90%
36.0	500.148	36.277	3375.3	0.86%	92.90%
37.0	366.739	28.273	3403.573	0.67%	93.68%

$\gamma(^{\circ})$	Average I(cd)	Zonal F(lm)	Sum F(lm)	Eff Flux(%)	Eff Sum(%)
38.0	268.713	21.211	3424.784	0.50%	94.26%
39.0	214.792	16.503	3441.287	0.39%	94.72%
40.0	168.238	13.359	3454.646	0.32%	95.08%
41.0	110.805	9.937	3464.583	0.23%	95.36%
42.0	98.406	7.601	3472.184	0.18%	95.57%
43.0	88.932	6.940	3479.123	0.16%	95.76%
44.0	81.368	6.428	3485.551	0.15%	95.93%
45.0	75.355	6.023	3491.574	0.14%	96.10%
46.0	70.461	5.703	3497.276	0.13%	96.26%
47.0	66.021	5.428	3502.705	0.13%	96.41%
48.0	62.700	5.204	3507.908	0.12%	96.55%
49.0	59.444	5.016	3512.924	0.12%	96.69%
50.0	56.482	4.833	3517.757	0.11%	96.82%
51.0	53.592	4.657	3522.414	0.11%	96.95%
52.0	51.119	4.493	3526.908	0.11%	97.07%
53.0	48.998	4.355	3531.263	0.10%	97.19%
54.0	46.774	4.221	3535.484	0.10%	97.31%
55.0	44.901	4.092	3539.576	0.10%	97.42%
56.0	43.212	3.982	3543.558	0.09%	97.53%
57.0	41.609	3.878	3547.436	0.09%	97.64%
58.0	39.905	3.770	3551.206	0.09%	97.74%
59.0	38.201	3.651	3554.857	0.09%	97.84%
60.0	36.511	3.530	3558.387	0.08%	97.94%
61.0	34.814	3.404	3561.79	0.08%	98.03%
62.0	33.190	3.277	3565.067	0.08%	98.12%
63.0	31.449	3.144	3568.211	0.07%	98.21%
64.0	29.964	3.013	3571.224	0.07%	98.29%
65.0	28.654	2.901	3574.125	0.07%	98.37%
66.0	27.542	2.804	3576.929	0.07%	98.45%
67.0	26.459	2.715	3579.644	0.06%	98.52%
68.0	25.508	2.633	3582.277	0.06%	98.60%
69.0	24.894	2.571	3584.848	0.06%	98.67%
70.0	24.601	2.542	3587.39	0.06%	98.74%
71.0	24.579	2.542	3589.932	0.06%	98.81%
72.0	24.704	2.563	3592.495	0.06%	98.88%
73.0	24.843	2.591	3595.086	0.06%	98.95%
74.0	24.938	2.617	3597.703	0.06%	99.02%
75.0	24.953	2.636	3600.339	0.06%	99.09%

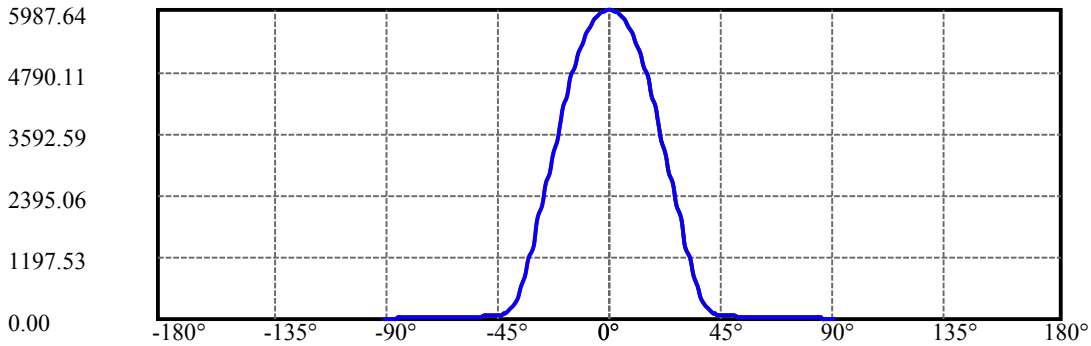
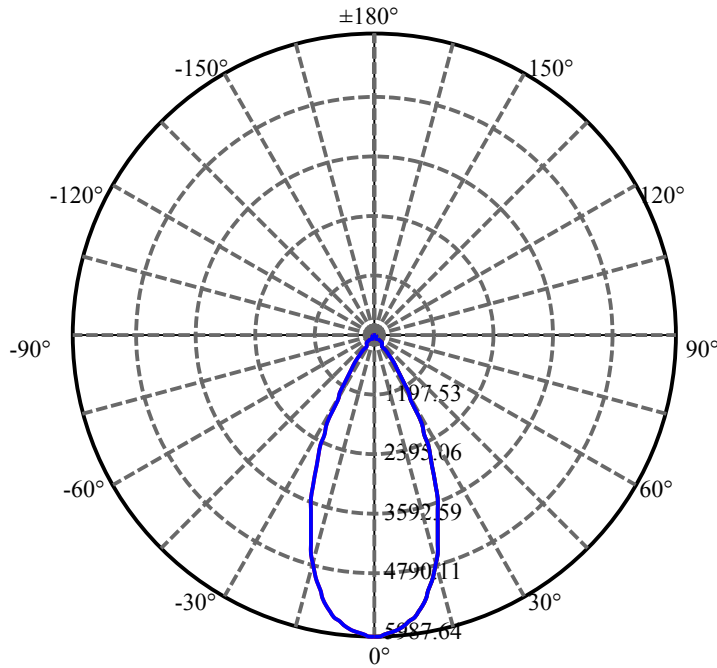
$\gamma(^{\circ})$	Average I(cd)	Zonal F(lm)	Sum F(lm)	Eff Flux(%)	Eff Sum(%)
76.0	24.872	2.645	3602.984	0.06%	99.17%
77.0	24.740	2.645	3605.629	0.06%	99.24%
78.0	24.536	2.638	3608.267	0.06%	99.31%
79.0	24.184	2.618	3610.884	0.06%	99.38%
80.0	23.511	2.571	3613.456	0.06%	99.45%
81.0	22.787	2.504	3615.959	0.06%	99.52%
82.0	21.529	2.403	3618.363	0.06%	99.59%
83.0	20.110	2.264	3620.626	0.05%	99.65%
84.0	18.632	2.111	3622.737	0.05%	99.71%
85.0	17.220	1.957	3624.694	0.05%	99.76%
86.0	16.328	1.834	3626.527	0.04%	99.81%
87.0	15.757	1.756	3628.283	0.04%	99.86%
88.0	15.348	1.704	3629.987	0.04%	99.91%
89.0	15.040	1.666	3631.653	0.04%	99.95%
90.0	14.974	1.646	3633.298	0.04%	100.00%

ZONAL LUMEN SUMMARY

Zone	Lumens	%Lamp	%Fixt
0-30	3024.89	71.51%	83.25%
0-40	3454.65	81.67%	95.08%
0-60	3558.39	84.12%	97.94%
0-90	3631.65	85.85%	99.95%
0-120	3631.65	85.85%	99.95%
0-180	3633.30	85.89%	100.00%
60-90	73.27	1.73%	2.02%
90-120	0.00	0.00%	0.00%
90-130	0.00	0.00%	0.00%
90-150	0.00	0.00%	0.00%
90-180	0.00	0.00%	0.00%
0-28.71	2906.64	68.71%	80.00%

ZONAL LUMEN SUMMARY

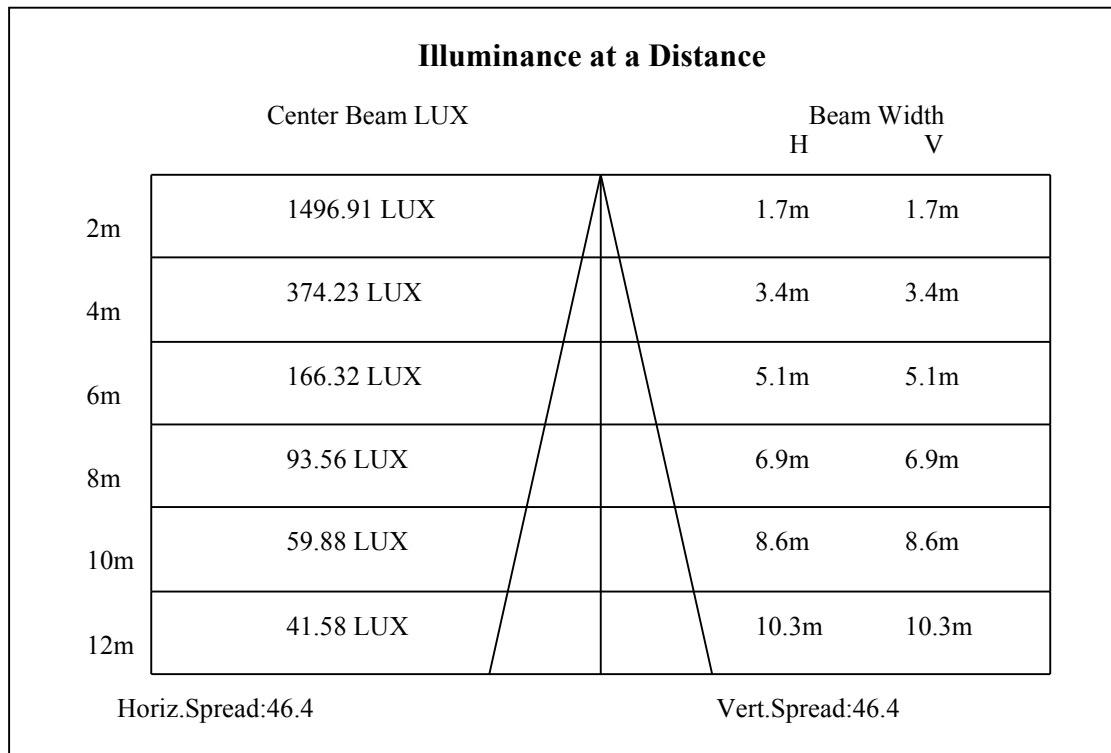
0-10	545.88
10-20	1293.98
20-30	1185.03
30-40	429.75
40-50	63.11
50-60	40.63
60-70	29.00
70-80	26.07
80-90	18.20
90-100	0.00
100-110	0.00
110-120	0.00
120-130	0.00
130-140	0.00
140-150	0.00
150-160	0.00
160-170	0.00
170-180	0.00

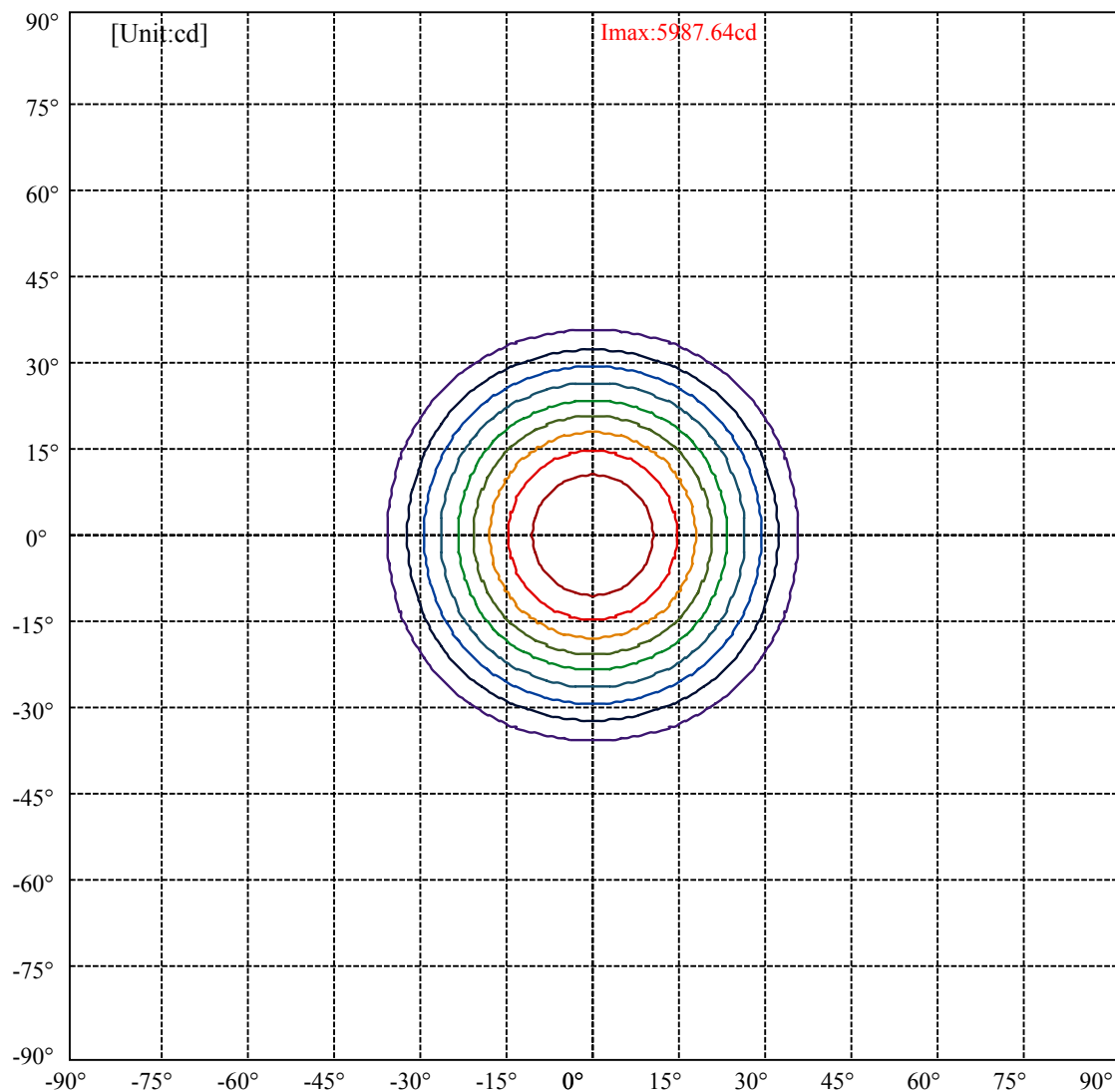


C0(Max): —————  
C0/C180: —————  
C90/C270: —————

Field angle(10%Imax):C0/180Left:35.3 Right:35.3  
:C90/270Left:35.3 Right:35.3

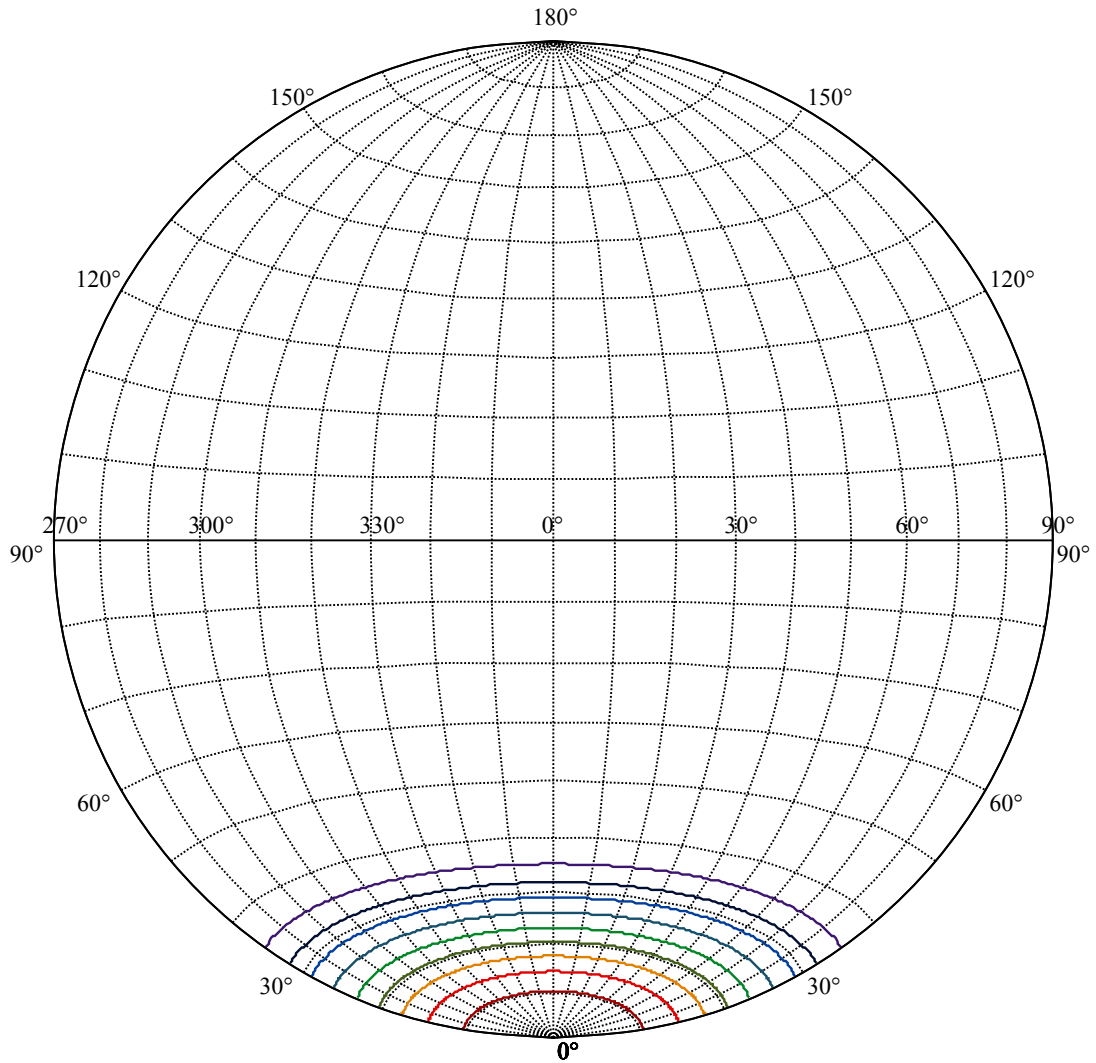
Beam Angle(50%Imax):C0/180Left:23.2 Right:23.2  
:C90/270Left:23.2 Right:23.2





(10%Imax) 598.764	—
(20%Imax) 1197.53	—
(30%Imax) 1796.29	—
(40%Imax) 2395.06	—
(50%Imax) 2993.82	—
(60%Imax) 3592.59	—
(70%Imax) 4191.35	—
(80%Imax) 4790.11	—
(90%Imax) 5388.88	—





House

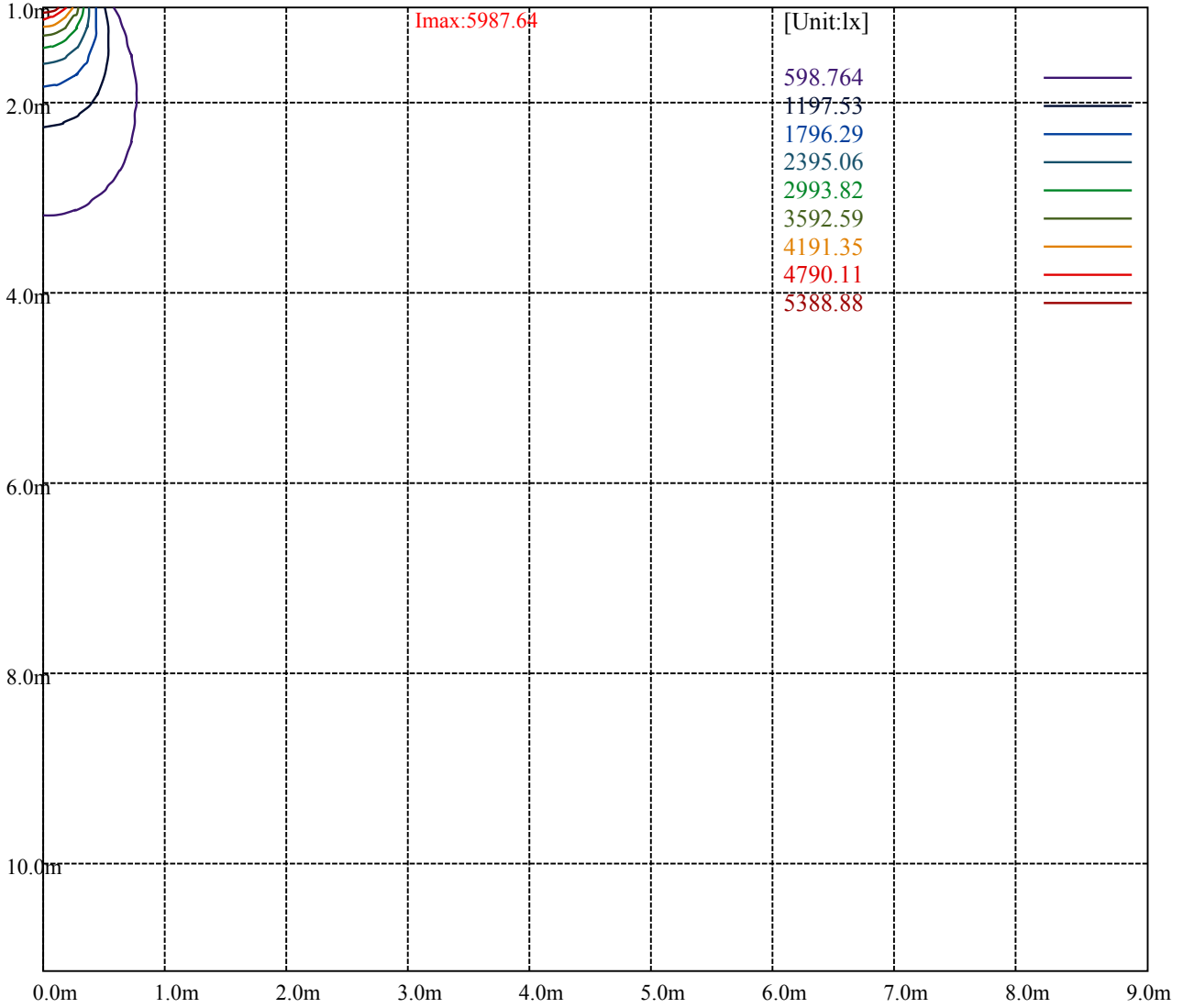
[Unit:cd]

Road

**Imax:5987.64**

(10%Imax) 598.764	—
(20%Imax) 1197.53	—
(30%Imax) 1796.29	—
(40%Imax) 2395.06	—
(50%Imax) 2993.82	—
(60%Imax) 3592.59	—
(70%Imax) 4191.35	—
(80%Imax) 4790.11	—
(90%Imax) 5388.88	—





Luminance Table

$\gamma$	45	50	55	60	65	70	75	80	85
C0	0	0	0	0	0	0	0	0	0
C45	0	0	0	0	0	0	0	0	0
C90	0	0	0	0	0	0	0	0	0

L(Hor)(65)	L(Ver)(65)	L45(65)	L(Hor)(75)	L(Ver)(75)	L45(75)	L(Hor)(85)	L(Ver)(85)	L45(85)
0	0	0	0	0	0	0	0	0

Glare Table

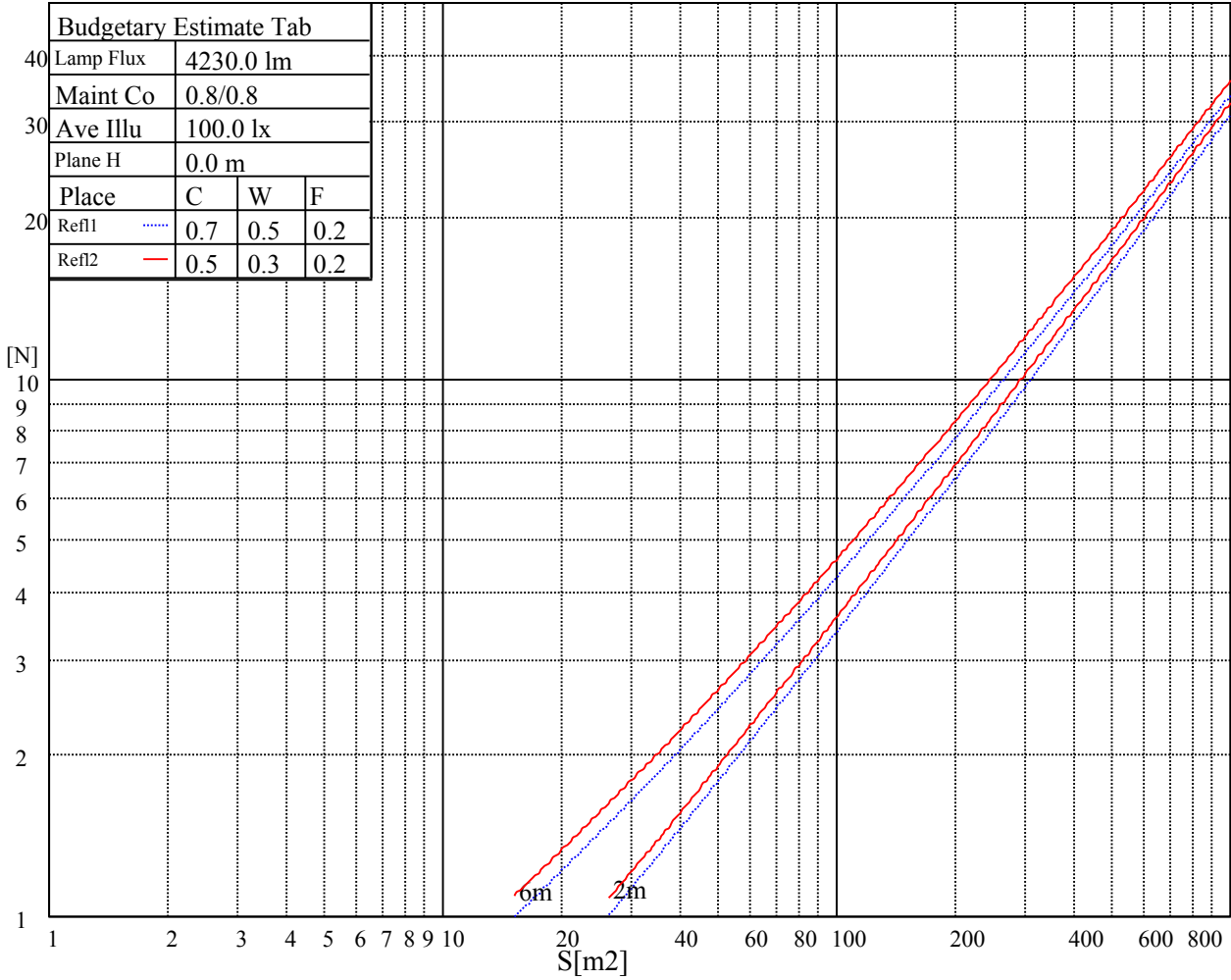
Glare	Quality	Service Values Illuminance(lx)							
1.15	A	2000	1000	500	<=300				
1.5	B		2000	1000	500	<=300			
1.85	C			2000	1000	500	<=300		
2.2	D				2000	1000	500	<=300	
2.55	E					2000	1000	500	<=300
		a	b	c	d	e	f	g	h

Luminance Limiting Curve

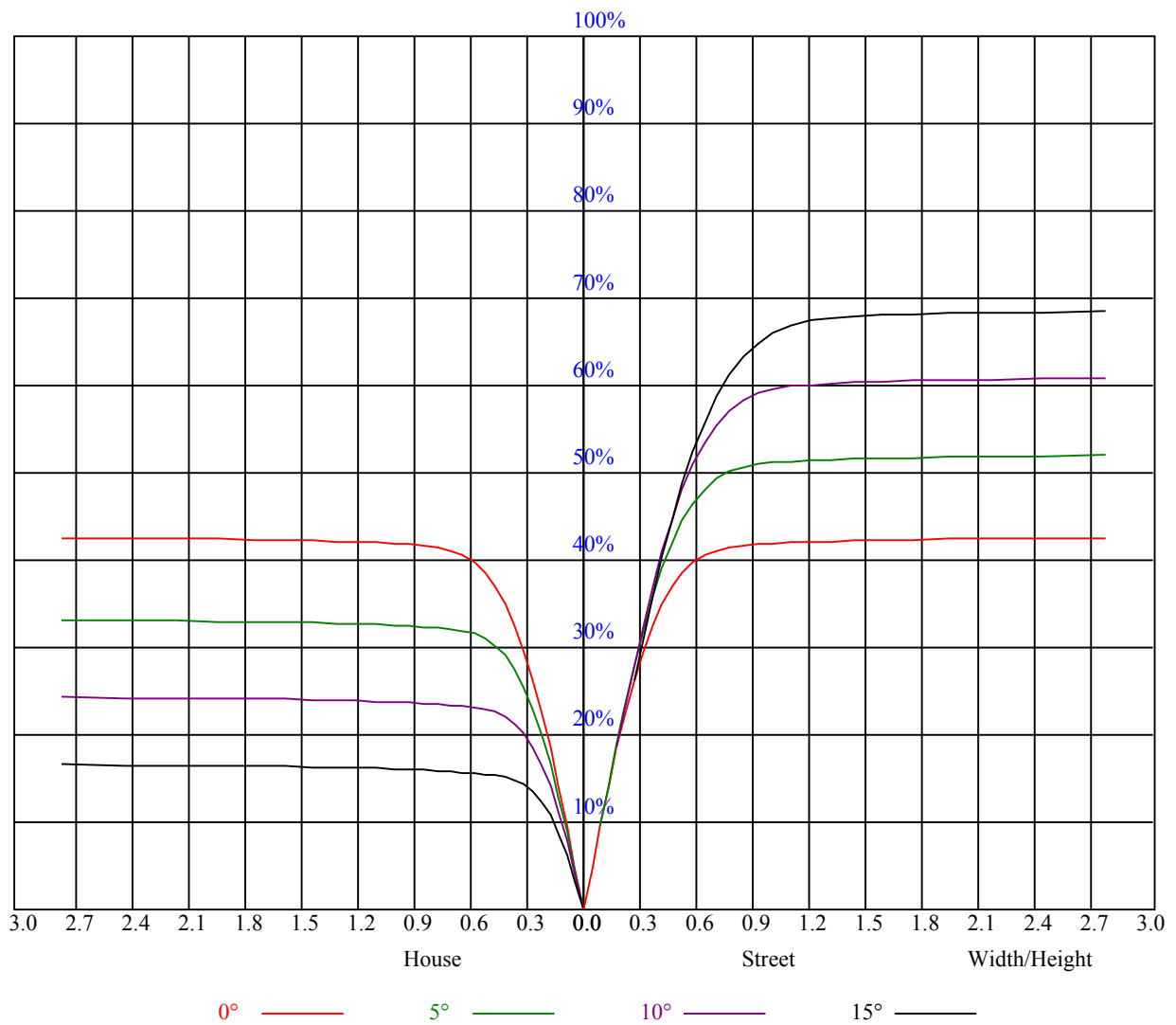


Illumination assessment according UGR											
Rf of Ceiling	70	70	50	50	30	70	70	50	50	30	
Rf of Wall	50	30	50	30	30	50	30	50	30	30	
Rf of Floor	20	20	20	20	20	20	20	20	20	20	
Room dimensions		Viewed crosswise					Viewed endwise				
X	Y										
2H	2H	非数字	非数字	非数字	非数字	非数字	非数字	非数字	非数字	非数字	非数字
	3H	非数字	非数字	非数字	非数字	非数字	非数字	非数字	非数字	非数字	非数字
	4H	非数字	非数字	非数字	非数字	非数字	非数字	非数字	非数字	非数字	非数字
	6H	非数字	非数字	非数字	非数字	非数字	非数字	非数字	非数字	非数字	非数字
	8H	非数字	非数字	非数字	非数字	非数字	非数字	非数字	非数字	非数字	非数字
4H	12H	非数字	非数字	非数字	非数字	非数字	非数字	非数字	非数字	非数字	非数字
	2H	非数字	非数字	非数字	非数字	非数字	非数字	非数字	非数字	非数字	非数字
	3H	非数字	非数字	非数字	非数字	非数字	非数字	非数字	非数字	非数字	非数字
	4H	非数字	非数字	非数字	非数字	非数字	非数字	非数字	非数字	非数字	非数字
	6H	非数字	非数字	非数字	非数字	非数字	非数字	非数字	非数字	非数字	非数字
8H	8H	非数字	非数字	非数字	非数字	非数字	非数字	非数字	非数字	非数字	非数字
	12H	非数字	非数字	非数字	非数字	非数字	非数字	非数字	非数字	非数字	非数字
	4H	非数字	非数字	非数字	非数字	非数字	非数字	非数字	非数字	非数字	非数字
	6H	非数字	非数字	非数字	非数字	非数字	非数字	非数字	非数字	非数字	非数字
	8H	非数字	非数字	非数字	非数字	非数字	非数字	非数字	非数字	非数字	非数字
12H	12H	非数字	非数字	非数字	非数字	非数字	非数字	非数字	非数字	非数字	非数字
	4H	非数字	非数字	非数字	非数字	非数字	非数字	非数字	非数字	非数字	非数字
	6H	非数字	非数字	非数字	非数字	非数字	非数字	非数字	非数字	非数字	非数字
8H	非数字	非数字	非数字	非数字	非数字	非数字	非数字	非数字	非数字	非数字	
Variation with the observer position at spacings:											
S = 1.0H	非数字/非数字					非数字/非数字					
S = 1.5H	非数字/非数字					非数字/非数字					
S = 2.0H	非数字/非数字					非数字/非数字					
Standard tables:	BK0					BK0					
Uncorrected UGR	负无穷大					负无穷大					

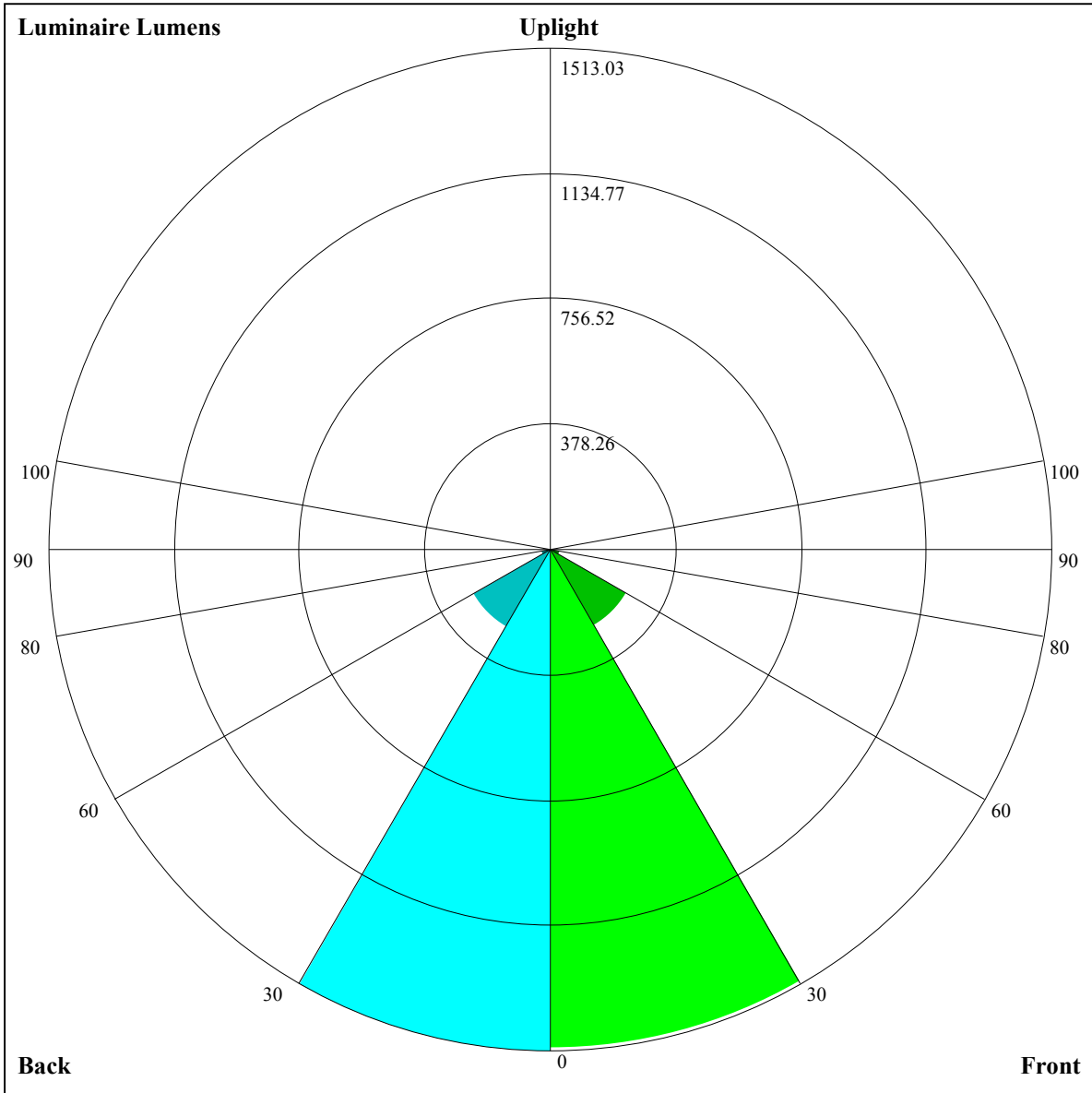
UGR calculation is based on CIE Publ. 117 ,S/H = 0.25



RHOCC	80			70			50			30			10			0
RHOW	50	30	10	50	30	10	50	30	10	50	30	10	50	30	10	0
RCR	COEFFICIENTS OF UTILIZATION RHOFC=20 CU															
0	1.02	1.02	1.02	1.00	1.00	1.00	0.95	0.95	0.95	0.91	0.91	0.91	0.88	0.88	0.88	0.86
1	0.95	0.93	0.91	0.93	0.92	0.90	0.90	0.88	0.87	0.87	0.86	0.85	0.84	0.83	0.82	0.81
2	0.89	0.86	0.83	0.88	0.85	0.82	0.85	0.83	0.80	0.82	0.80	0.79	0.80	0.79	0.77	0.76
3	0.84	0.80	0.77	0.83	0.79	0.76	0.80	0.77	0.75	0.78	0.76	0.74	0.77	0.74	0.73	0.71
4	0.79	0.75	0.71	0.78	0.74	0.71	0.76	0.73	0.70	0.75	0.72	0.69	0.73	0.71	0.69	0.67
5	0.75	0.70	0.67	0.74	0.70	0.67	0.73	0.69	0.66	0.71	0.68	0.65	0.70	0.67	0.65	0.64
6	0.71	0.66	0.63	0.70	0.66	0.63	0.69	0.65	0.62	0.68	0.64	0.62	0.67	0.64	0.61	0.60
7	0.67	0.63	0.59	0.67	0.62	0.59	0.66	0.62	0.59	0.65	0.61	0.59	0.64	0.61	0.58	0.57
8	0.64	0.59	0.56	0.64	0.59	0.56	0.63	0.59	0.56	0.62	0.58	0.56	0.61	0.58	0.55	0.54
9	0.61	0.56	0.53	0.61	0.56	0.53	0.60	0.56	0.53	0.59	0.56	0.53	0.59	0.55	0.53	0.52
10	0.58	0.54	0.51	0.58	0.54	0.51	0.57	0.53	0.51	0.57	0.53	0.50	0.56	0.53	0.50	0.49







Luminaire Lumens:

FL=1504.6,FM=264.9,FH=27.5,FVH=9.91

BL=1513.03,BM=271.69,BH=27.61,BVH=9.95

UL=0,UH=0

BUG Rating:B3-U0-G0

Intensity data(cd)

C/γ(°)	0.0	1.0	2.0	3.0	4.0	5.0	6.0	7.0	8.0
0.0	5992.76	5985.74	5961.16	5935.41	5890.35	5842.94	5785.59	5700.74	5621.73
45.0	5985.15	5996.86	5999.79	5986.91	5961.16	5935.41	5886.84	5841.77	5780.33
90.0	5996.27	5999.20	5985.15	5961.16	5930.14	5880.40	5833.58	5770.96	5700.74
135.0	5976.38	5986.33	5982.23	5969.94	5932.48	5899.13	5855.23	5806.66	5735.26
180.0	5992.76	5992.18	5976.38	5944.19	5911.42	5858.75	5814.27	5755.75	5669.13
225.0	5985.15	5957.06	5928.39	5890.35	5848.21	5783.25	5717.71	5640.46	5552.67
270.0	5996.27	5984.57	5955.31	5918.44	5874.55	5827.73	5778.57	5720.05	5621.14
315.0	5976.38	5946.53	5917.27	5872.21	5821.29	5766.28	5710.10	5614.12	5525.75
360.0	5992.76	5985.74	5961.16	5935.41	5890.35	5842.94	5785.59	5700.74	5621.73
C/γ(°)	9.0	10.0	11.0	12.0	13.0	14.0	15.0	16.0	17.0
0.0	5498.83	5389.40	5267.08	5141.85	4961.01	4818.80	4656.11	4485.22	4251.13
45.0	5689.62	5596.57	5489.47	5371.84	5219.10	5083.91	4937.02	4781.35	4572.42
90.0	5586.62	5479.52	5363.06	5235.48	5062.25	4915.95	4763.79	4556.04	4371.10
135.0	5655.67	5574.33	5438.55	5320.34	5193.93	5025.97	4879.08	4681.86	4509.80
180.0	5578.42	5483.62	5339.07	5214.41	5043.53	4901.32	4753.26	4598.17	4377.54
225.0	5415.15	5296.34	5134.24	4996.71	4852.74	4660.21	4497.51	4319.02	4080.25
270.0	5532.78	5432.12	5316.24	5151.21	5015.44	4872.06	4715.80	4506.88	4328.97
315.0	5419.24	5278.20	5154.14	5019.53	4877.91	4680.69	4519.17	4345.35	4158.08
360.0	5498.83	5389.40	5267.08	5141.85	4961.01	4818.80	4656.11	4485.22	4251.13
C/γ(°)	18.0	19.0	20.0	21.0	22.0	23.0	24.0	25.0	26.0
0.0	4058.59	3861.96	3600.36	3390.27	3184.27	2941.40	2752.96	2570.37	2333.94
45.0	4390.42	4202.56	3954.42	3744.33	3483.90	3272.64	3067.81	2829.62	2640.59
90.0	4132.33	3926.92	3719.16	3507.31	3241.62	3042.06	2845.42	2656.39	2424.06
135.0	4330.72	4143.45	3896.49	3691.07	3474.54	3269.13	3020.99	2828.45	2641.18
180.0	4186.17	3987.78	3797.58	3530.72	3308.92	3128.67	2875.27	2696.19	2515.36
225.0	3873.66	3669.42	3461.66	3254.49	3008.70	2822.01	2634.74	2400.65	2214.55
270.0	4084.93	3884.20	3685.81	3407.82	3200.07	3011.63	2806.80	2582.66	2397.73
315.0	3904.09	3701.02	3488.00	3232.84	3030.94	2793.92	2614.26	2429.33	2240.89
360.0	4058.59	3861.96	3600.36	3390.27	3184.27	2941.40	2752.96	2570.37	2333.94
C/γ(°)	27.0	28.0	29.0	30.0	31.0	32.0	33.0	34.0	35.0
0.0	2132.62	1934.81	1739.35	1165.65	1165.65	1120.53	943.56	735.69	583.94
45.0	2448.64	2255.52	2055.95	1811.33	1623.47	1425.67	1241.32	1009.57	833.42
90.0	2232.69	2034.30	1839.42	1596.55	1126.79	1126.79	992.07	817.73	618.00
135.0	2407.67	2213.96	2016.74	1772.71	1585.43	1394.06	1170.51	995.53	826.40
180.0	2273.66	2082.87	1893.85	1636.35	1434.44	1262.97	1092.67	863.85	697.65
225.0	1969.93	1771.53	1574.90	1150.44	1150.44	969.02	797.95	604.89	469.64
270.0	2212.79	2018.50	1782.65	1571.39	1389.97	1154.12	965.09	791.87	596.40
315.0	1996.26	1796.11	1600.06	1166.88	1166.88	987.74	816.62	625.72	488.19
360.0	2132.62	1934.81	1739.35	1165.65	1165.65	1120.53	943.56	735.69	583.94
C/γ(°)	36.0	37.0	38.0	39.0	40.0	41.0	42.0	43.0	44.0
0.0	449.63	334.10	219.93	158.07	122.60	110.02	99.14	88.37	81.40
45.0	670.73	488.72	362.31	306.72	306.72	125.12	107.68	97.91	89.89
90.0	476.43	357.46	237.25	168.43	129.69	113.01	101.30	90.30	82.87
135.0	668.97	491.06	364.65	308.47	308.47	123.19	108.91	97.50	86.91
180.0	557.19	428.44	313.74	313.74	137.94	112.95	97.38	88.37	79.24
225.0	352.31	255.57	167.84	128.11	109.91	98.49	87.49	80.23	74.73
270.0	459.46	315.49	315.49	206.99	121.49	104.99	95.27	87.55	80.12
315.0	366.47	263.06	168.49	127.81	109.09	98.67	90.07	81.23	75.79
360.0	449.63	334.10	219.93	158.07	122.60	110.02	99.14	88.37	81.40

Intensity data(cd)

C/γ(°)	45.0	46.0	47.0	48.0	49.0	50.0	51.0	52.0	53.0
0.0	76.02	70.29	66.54	63.26	60.16	56.59	53.96	51.50	49.33
45.0	81.58	75.08	70.75	66.95	63.73	59.87	57.18	54.60	52.26
90.0	77.02	71.98	66.60	63.09	59.28	56.42	53.78	50.80	48.63
135.0	80.53	74.97	69.29	65.31	61.21	58.29	55.48	52.90	50.62
180.0	73.80	69.35	64.73	61.57	58.82	56.18	53.14	50.80	48.63
225.0	69.00	65.25	61.33	58.64	55.89	53.43	50.45	48.22	46.53
270.0	73.56	69.35	65.66	62.50	58.99	56.30	53.08	50.74	48.57
315.0	71.34	67.42	63.26	60.28	57.47	54.78	51.68	49.39	47.40
360.0	76.02	70.29	66.54	63.26	60.16	56.59	53.96	51.50	49.33
C/γ(°)	54.0	55.0	56.0	57.0	58.0	59.0	60.0	61.0	62.0
0.0	46.88	45.06	43.42	41.38	39.68	37.69	36.05	34.41	32.83
45.0	49.57	47.64	45.41	43.83	42.31	40.26	38.68	36.99	35.29
90.0	46.76	44.59	42.96	41.43	39.74	38.16	36.28	34.70	33.07
135.0	47.99	46.12	44.48	42.96	41.20	39.68	37.75	36.23	34.65
180.0	46.76	44.71	43.19	41.73	39.85	38.33	36.93	35.05	33.47
225.0	44.89	43.01	41.49	39.91	38.39	36.52	34.94	32.95	31.49
270.0	46.29	44.59	43.13	41.61	39.68	38.10	36.64	35.00	33.07
315.0	45.06	43.48	41.61	40.03	38.39	36.87	34.82	33.18	31.66
360.0	46.88	45.06	43.42	41.38	39.68	37.69	36.05	34.41	32.83
C/γ(°)	63.0	64.0	65.0	66.0	67.0	68.0	69.0	70.0	71.0
0.0	30.96	29.50	28.27	27.21	26.16	25.16	24.58	24.35	24.40
45.0	33.30	31.78	30.43	29.14	27.74	26.74	25.75	24.87	24.64
90.0	31.25	29.90	28.62	27.27	26.34	25.22	24.58	24.35	24.35
135.0	32.66	31.13	29.67	28.44	27.15	26.22	25.28	24.58	24.35
180.0	31.54	30.08	28.73	27.56	26.45	25.57	24.70	24.46	24.40
225.0	30.14	28.62	27.56	26.63	25.57	25.05	24.99	25.11	25.22
270.0	31.60	30.20	28.56	27.56	26.69	25.52	24.93	24.81	24.87
315.0	30.14	28.50	27.39	26.51	25.57	24.58	24.35	24.29	24.40
360.0	30.96	29.50	28.27	27.21	26.16	25.16	24.58	24.35	24.40
C/γ(°)	72.0	73.0	74.0	75.0	76.0	77.0	78.0	79.0	80.0
0.0	24.52	24.70	24.70	24.70	24.52	24.46	24.23	23.82	23.17
45.0	24.58	24.70	24.81	24.81	24.76	24.64	24.52	24.29	23.88
90.0	24.46	24.58	24.70	24.70	24.64	24.52	24.29	23.94	23.29
135.0	24.35	24.46	24.64	24.87	24.93	24.87	24.70	24.46	24.11
180.0	24.58	24.70	24.87	24.93	24.81	24.64	24.52	24.35	23.64
225.0	25.52	25.69	25.69	25.63	25.52	25.28	24.93	24.29	23.12
270.0	25.05	25.22	25.34	25.28	25.22	25.11	24.99	24.70	24.05
315.0	24.58	24.70	24.76	24.70	24.58	24.40	24.11	23.64	22.82
360.0	24.52	24.70	24.70	24.70	24.52	24.46	24.23	23.82	23.17
C/γ(°)	81.0	82.0	83.0	84.0	85.0	86.0	87.0	88.0	89.0
0.0	22.36	21.13	19.84	18.32	17.21	16.27	15.74	15.33	14.98
45.0	23.41	22.12	21.24	20.13	18.32	17.44	16.68	15.98	15.33
90.0	22.59	21.54	20.42	18.90	17.62	16.68	16.09	15.57	15.04
135.0	23.76	22.88	21.95	20.42	18.49	17.26	16.09	15.51	15.22
180.0	23.00	21.77	20.31	18.73	17.21	16.09	15.51	15.22	14.98
225.0	21.95	20.54	18.67	17.03	16.09	15.57	15.27	15.04	14.92
270.0	23.29	21.89	19.84	18.26	16.68	15.80	15.45	15.16	14.92
315.0	21.95	20.37	18.61	17.26	16.15	15.51	15.22	14.98	14.92
360.0	22.36	21.13	19.84	18.32	17.21	16.27	15.74	15.33	14.98

Intensity data(cd)

C/ $\gamma$ (°)	90.0
0.0	15.04
45.0	15.04
90.0	14.98
135.0	14.98
180.0	14.92
225.0	14.98
270.0	14.92
315.0	14.92
360.0	15.04